



Dibuje la manecilla de las horas y los minutos en el reloj para que represente la hora mostrada.

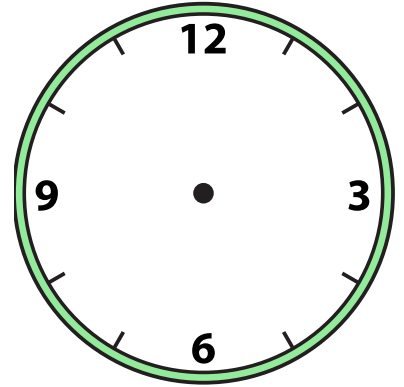
1) 10:00



2) 1:30



3) 6:30



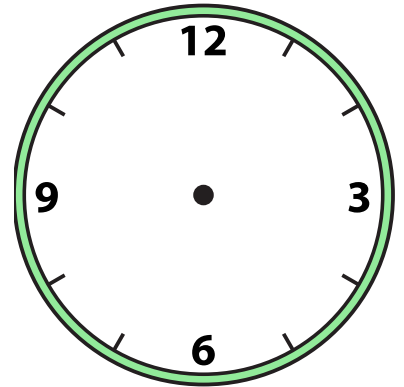
4) 5:00



5) 7:30



6) 2:30



7) 11:00



8) 12:30



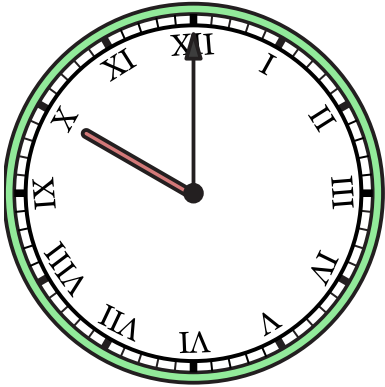
9) 9:00



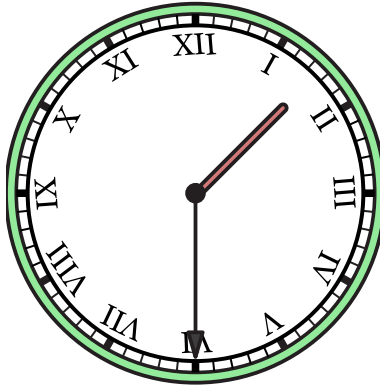


Dibuje la manecilla de las horas y los minutos en el reloj para que represente la hora mostrada.

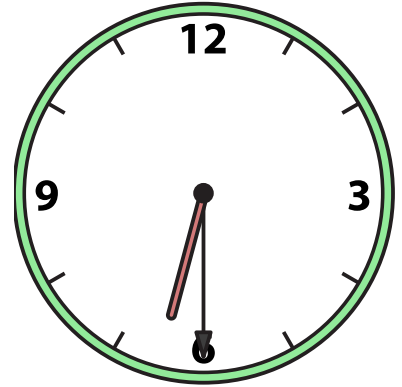
1) 10:00



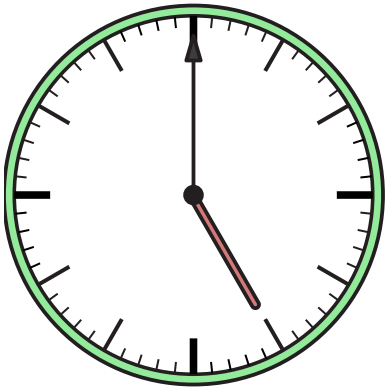
2) 1:30



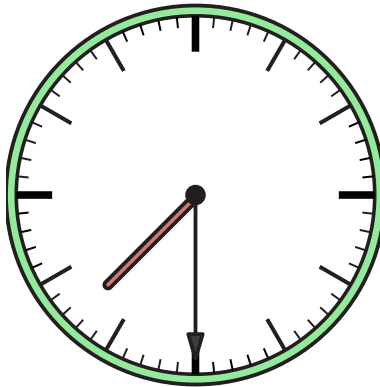
3) 6:30



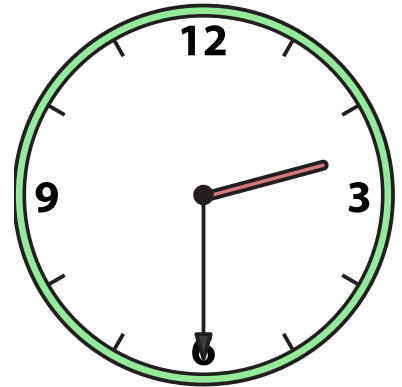
4) 5:00



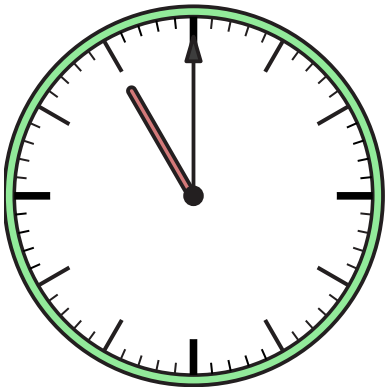
5) 7:30



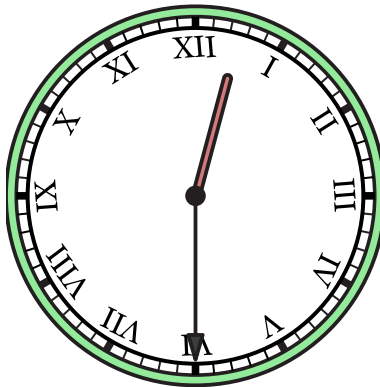
6) 2:30



7) 11:00



8) 12:30



9) 9:00

