

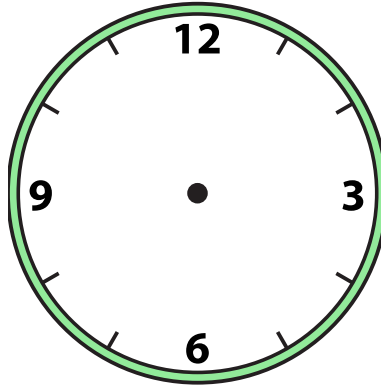


Dibuje la manecilla de las horas y los minutos en el reloj para que represente la hora mostrada.

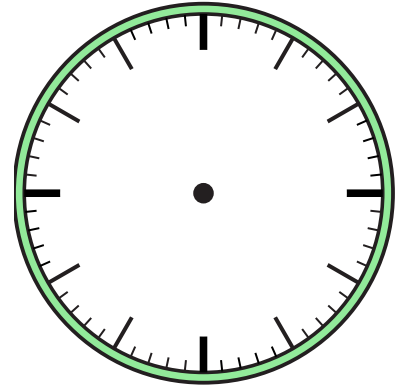
1) 2:30



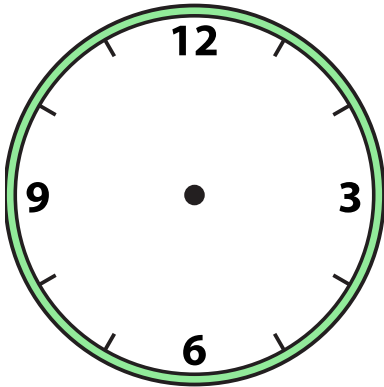
2) 2:00



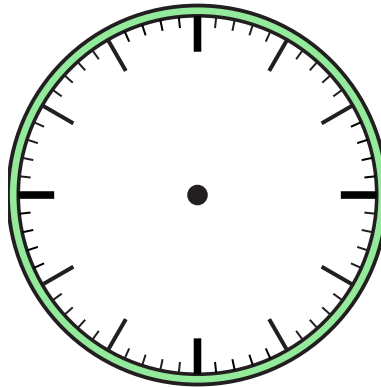
3) 8:00



4) 4:00



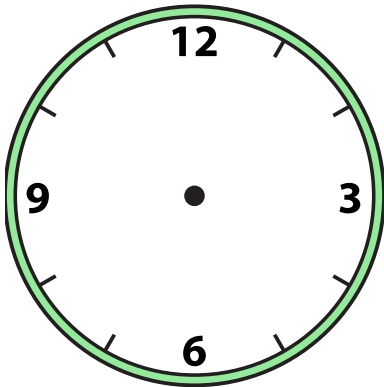
5) 10:30



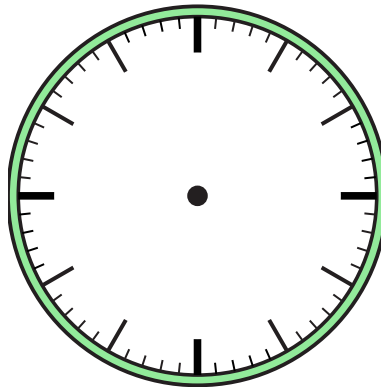
6) 11:00



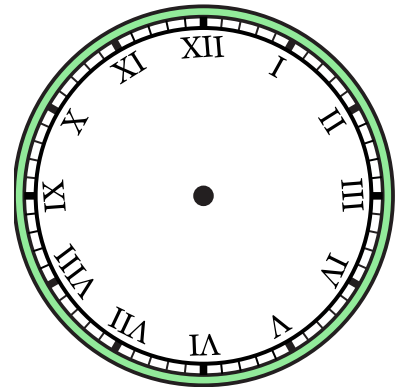
7) 9:30



8) 5:30



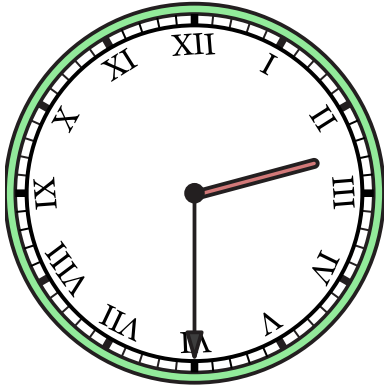
9) 12:00



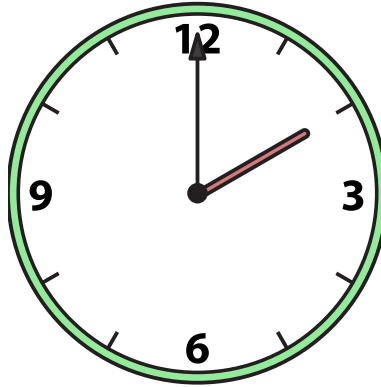


Dibuje la manecilla de las horas y los minutos en el reloj para que represente la hora mostrada.

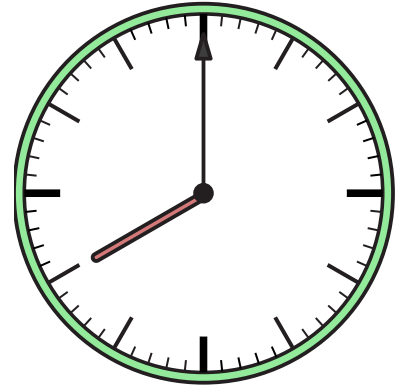
1) 2:30



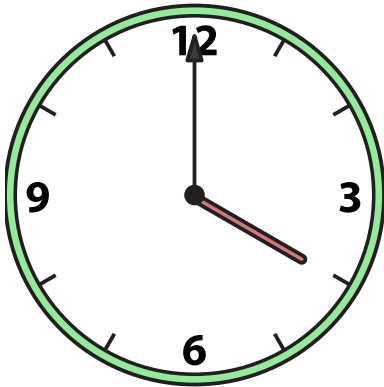
2) 2:00



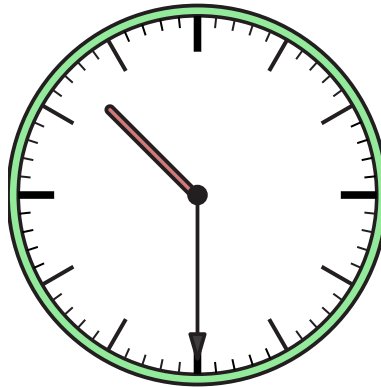
3) 8:00



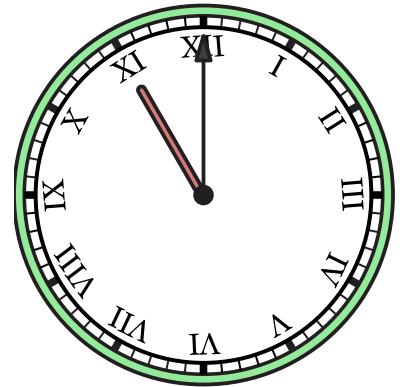
4) 4:00



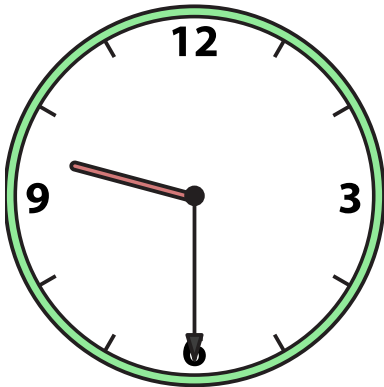
5) 10:30



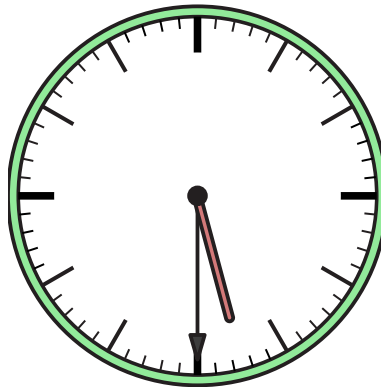
6) 11:00



7) 9:30



8) 5:30



9) 12:00

