



Dibuje la manecilla de las horas y los minutos en el reloj para que represente la hora mostrada.

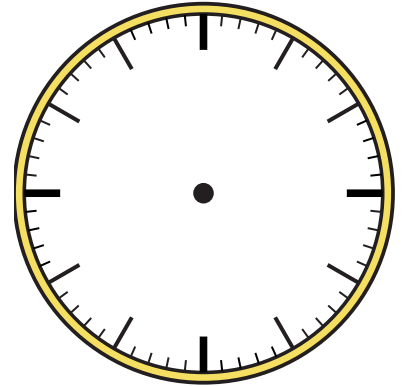
1) 2:55



2) 2:20



3) 8:00



4) 4:25



5) 10:50



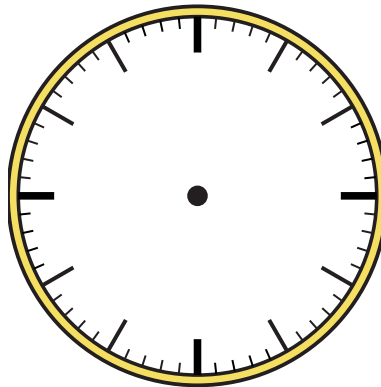
6) 11:20



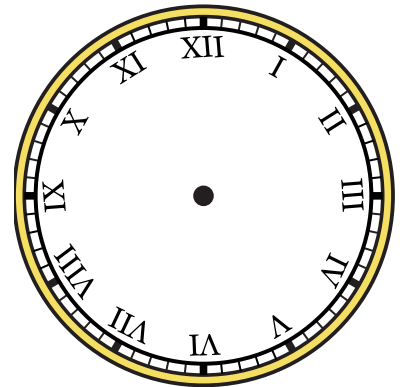
7) 4:20



8) 5:40



9) 12:25

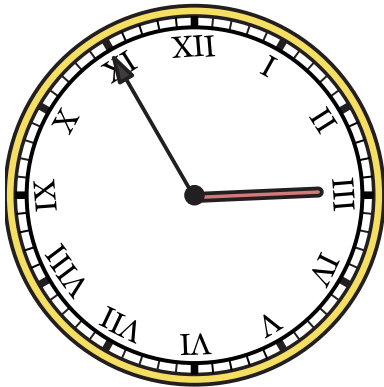




Dibuje la manecilla de las horas y los minutos en el reloj para que represente la hora mostrada.

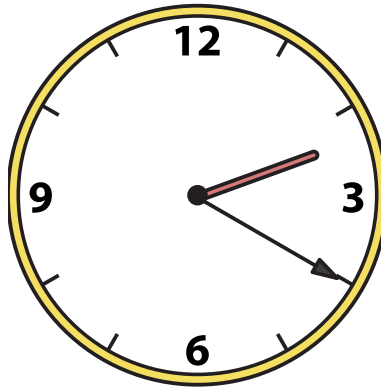
1)

2:55



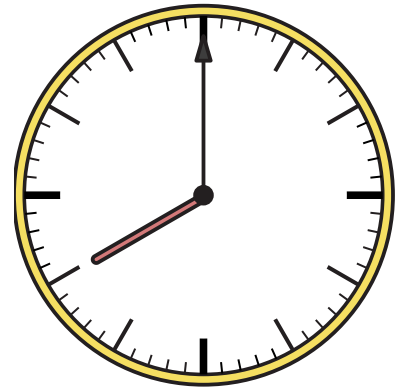
2)

2:20



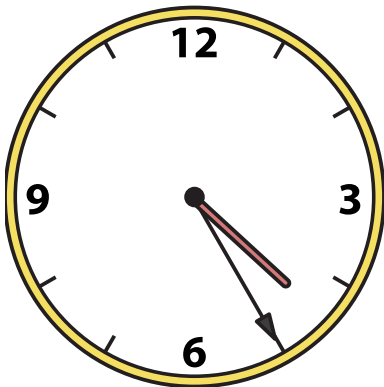
3)

8:00



4)

4:25



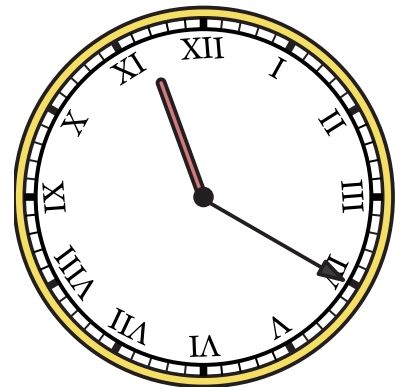
5)

10:50



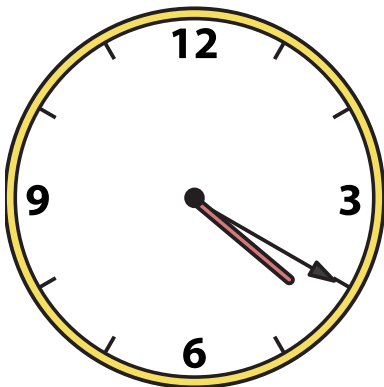
6)

11:20



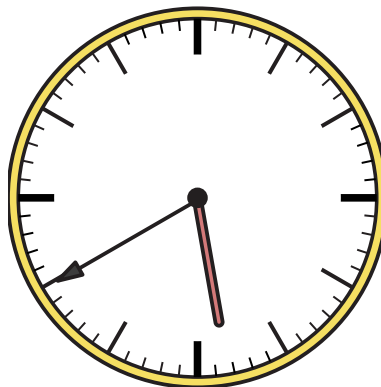
7)

4:20



8)

5:40



9)

12:25

