



Dibuje la manecilla de las horas y los minutos en el reloj para que represente la hora mostrada.

1) 1:35



2) 8:20



3) 1:10



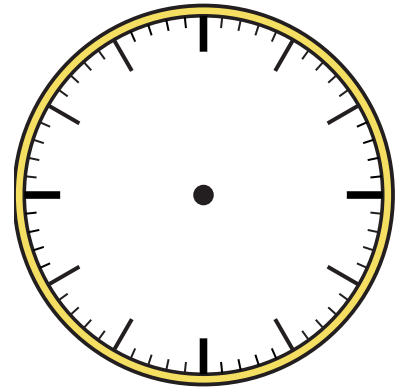
4) 12:40



5) 4:15



6) 10:15



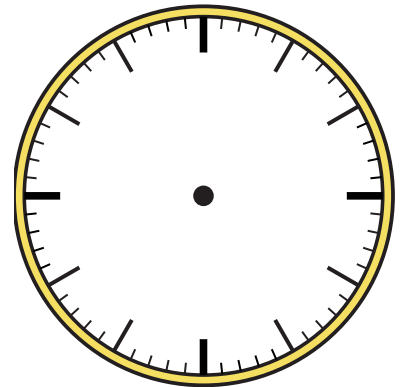
7) 6:55



8) 2:55



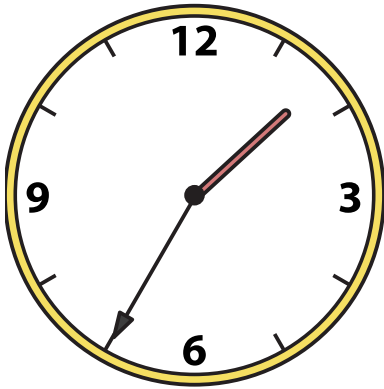
9) 4:25



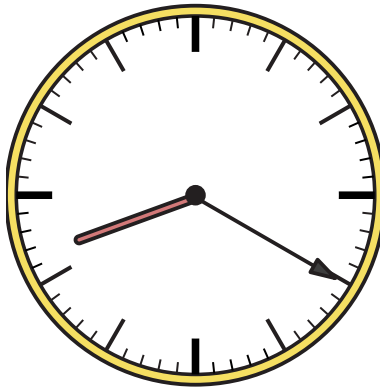


Dibuje la manecilla de las horas y los minutos en el reloj para que represente la hora mostrada.

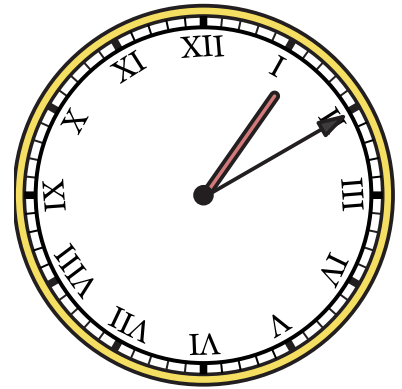
1) 1:35



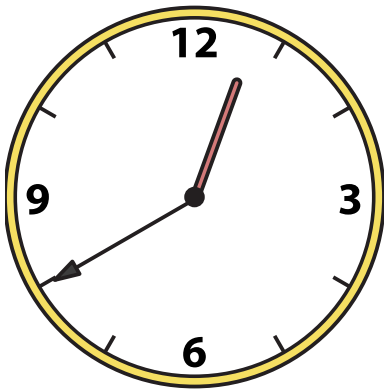
2) 8:20



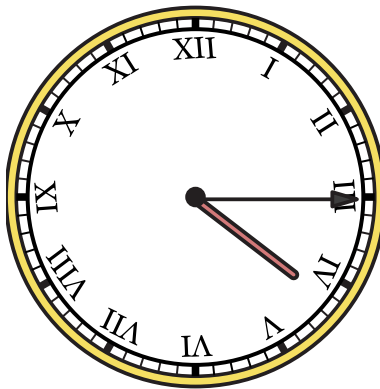
3) 1:10



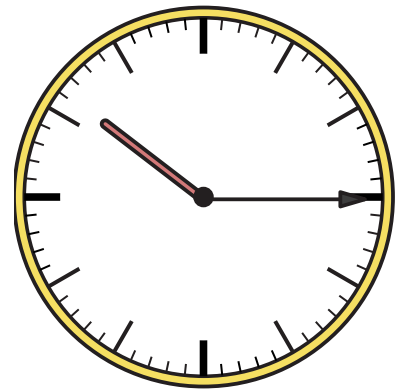
4) 12:40



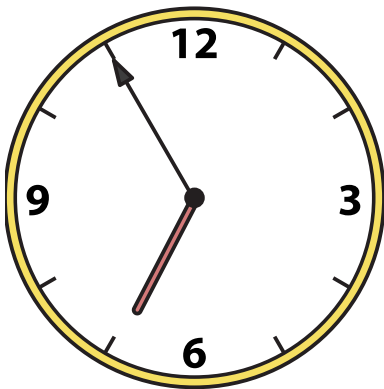
5) 4:15



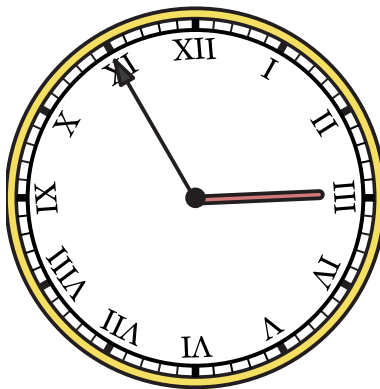
6) 10:15



7) 6:55



8) 2:55



9) 4:25

