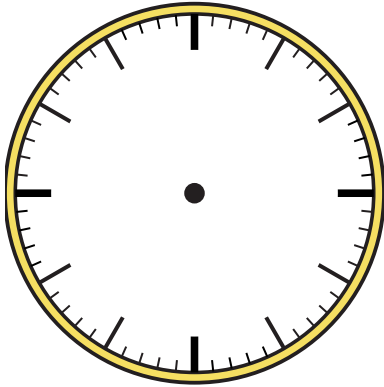




Dibuje la manecilla de las horas y los minutos en el reloj para que represente la hora mostrada.

1) 1:20



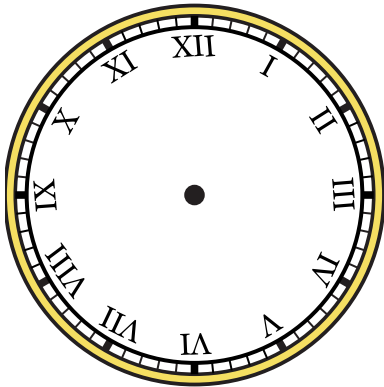
2) 9:25



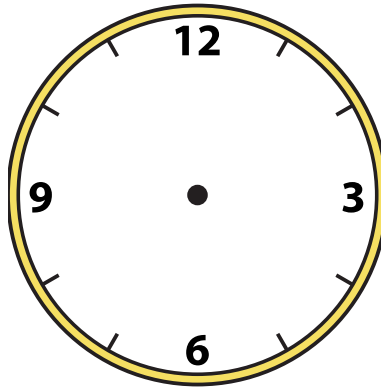
3) 7:40



4) 1:15



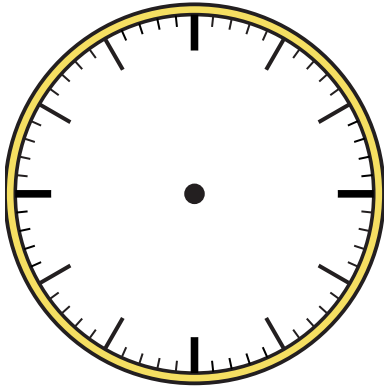
5) 12:00



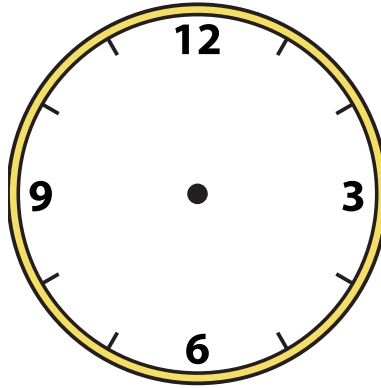
6) 6:45



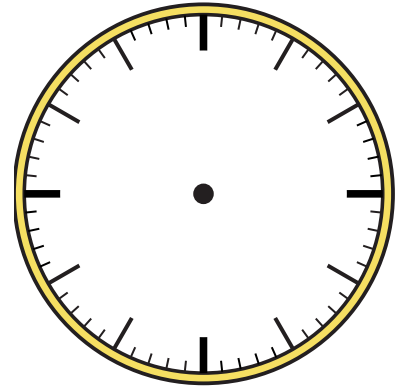
7) 2:55



8) 8:40



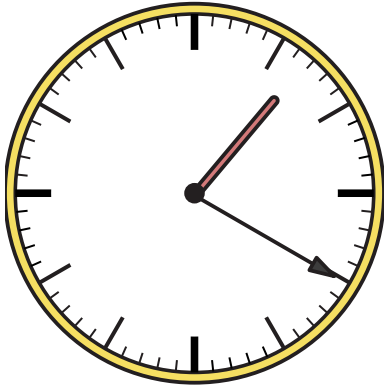
9) 9:35



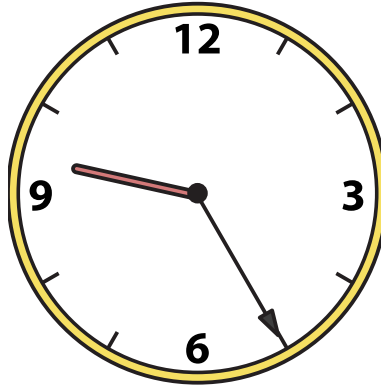


Dibuje la manecilla de las horas y los minutos en el reloj para que represente la hora mostrada.

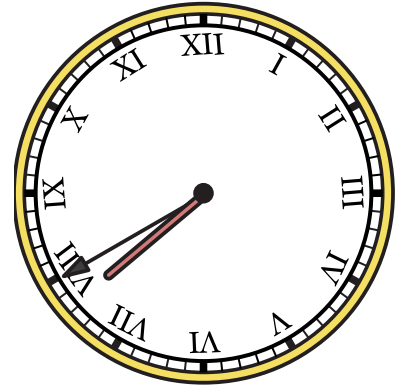
1) 1:20



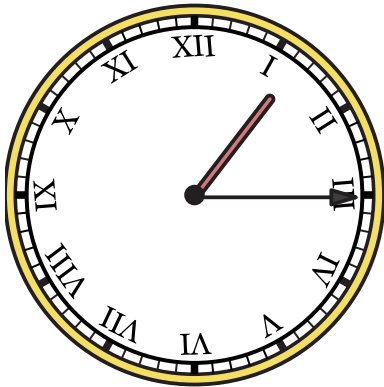
2) 9:25



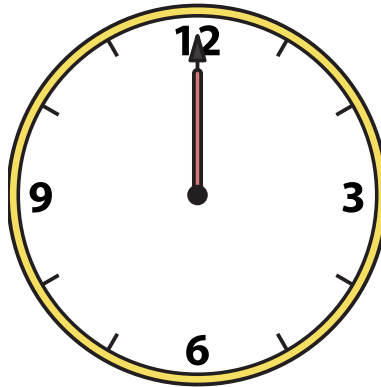
3) 7:40



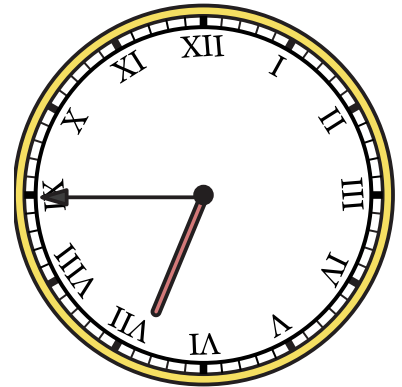
4) 1:15



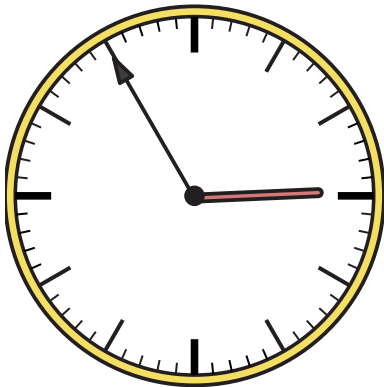
5) 12:00



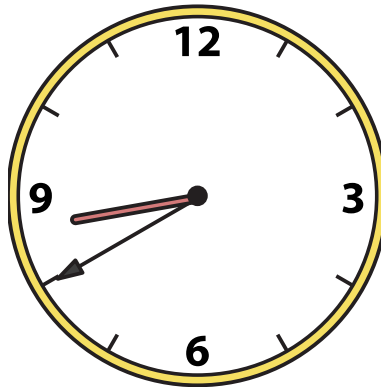
6) 6:45



7) 2:55



8) 8:40



9) 9:35

